

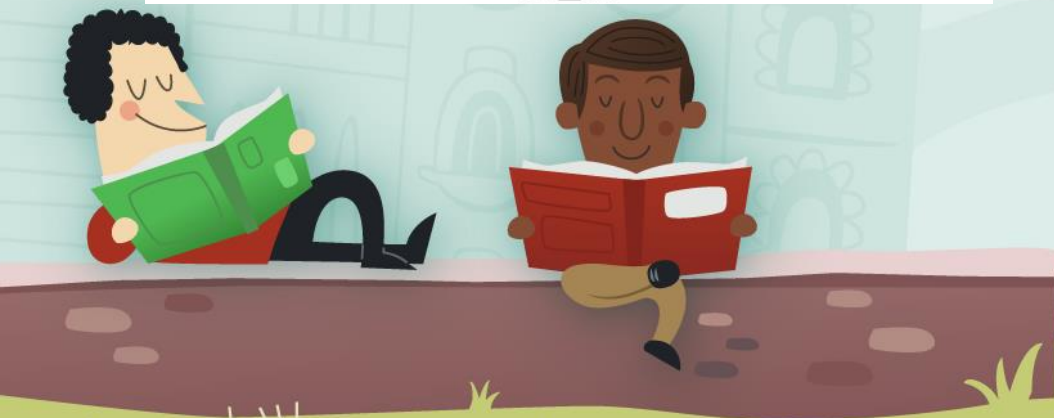


Ormesby Village Infant and
Junior Schools Federation

Reception Parents' Presentation

By Mr. Bradley Young,
Headteacher

www.ormesbyinfant.norfolk.sch.uk



Welcome



- Thank you for choosing our school.
- We are proud of our good reputation and endeavour to build upon our successes. Ofsted in December 2022 praised many areas of our 'Good' school.
- We are always looking forward to improving our provision and ensuring our school remains fresh and challenging.



Reception Staff

- Our Team who will work with your children at different times:
- Mrs. Bunker (Teacher)
- Mrs. Stokes (TA)
- Mrs. Newby (Cover Supervisor)
- Mrs. Howell (Cover Supervisor)



Pupil Voice – Why do you like being in Reception?

- “I liked planting potatoes.”
- “I like counting and sharing the Ladybird spots.”
- “I liked seeing Father Christmas.”
- “I like lunch and snack time.”
- “I like drawing and painting.”
- “I like building with Lego and Mobilo.”
- “I like going on the trikes and scooters.”
- “I like being in this class because I like Mrs. Bunker.”
- “I like the trim trail outside and the outdoor area.”
- “I like playing games with my friends.”
- “I like learning all the stuff that we do every day.”
- “I love Phonics.”



Vision and Ethos



- Our school vision is to ensure we are a nurturing environment underpinned by strong values.
- Our whole school community is a “family” where every child is treated individually and challenged through fantastic teaching to develop their uniqueness and uncover new talents. At Ormesby Village Infant School, we are always **“Learning to Grow and Growing to Learn.”**
- We are a school community that cares for, values and encourages all the children within our care.



Values



- Across our Federation, beginning in Reception, our values as chosen by all stakeholders (Honesty, Friendship, Respect, Togetherness, Aspiration, Resilience, Nurture and Family) are taught in class, in Good Work collective worships and at other times throughout the day.
- They underpin all practice within the school and adults working in school model these values at all times.



Welcome Packs



- School Brochure
- All About Me Books (Return them to us before the Summer holidays)
- Home/School Agreement
- School Admission Forms/Contact Details (Must have minimum two emergency contacts)
- Individual Healthcare Plan/Allergy/Additional Needs
- Consent Forms/Permissions/Photographs
- Information on Starting School Arrangements (This will be discussed later with the teacher)
- Please fill any forms in and hand them back to us or post them to us.



Safeguarding



- Your children will be very safe here with us.
- As trained staff we have a duty of care to all our children.
- We must report any issues, which we feel contravene the child protection guidance we receive.
- Key policies supporting this and other areas of the school are all available via our school website.



Additional Needs, Nurture & Intimate Care



- Some children may have additional needs or require support. Our Reception staff are highly experienced and will support you and your child.
- We have a dedicated SENDCo team, which work closely with staff and parents to ensure children are well supported.
- We have fantastic H.I.D.E. nurture provision and this is an area of the school we have expanded with the implementation of an reading therapy dog, Tilly.
- **Toileting - We would prefer that our Reception children are toilet trained before they join us**, however we appreciate such young children often have accidents or have additional needs delaying this. We encourage all parents to work on this over the Summer holidays with their children.
- Our staff follow an Intimate Care Policy when dealing with any issues of this nature.



Early Years Pupil Premium Funding and Free School Meals



- All Reception and KS1 children are entitled (as it stands) to a free school meal, hot or packed. However, a home packed lunch can still be provided. None are our catering providers, so please enjoy the meals they will be cooking. Children are often involved in meal choices and themed days/competitions will be run to make lunches even more appealing.
- Some families may be eligible for extra Government funding.
- Looked After Children/Low-Income Families/Families in Receipt of certain Benefits/Parent in the Military.
- If you feel you may be one of those families, please speak to us during coffee/tour of the school and we will be happy to give more information.
- [Early years funding - Schools \(norfolk.gov.uk\)](http://norfolk.gov.uk)



Working with Parents



- We love to work closely with our parents:
- Seasonal Events – Reading & Writing Cafes/Sports' Days/Performances/Curriculum Celebration Events/ Decoration day.
- Funky Fingers/Tapestry/Phonics Workshops
- Professional Skills – Can you visit and share your job with the pupils? Secret Reader.
- Helpers and Volunteers – Could you offer support on trips?
- Attendance and Illness – Please ensure you phone in if your child is not going to be in. To avoid a spread of infection and to keep everyone safe please ensure you adhere to the quarantine period for more infectious illnesses, particularly sickness and diarrhoea (Website for more information under the Parents' Information tab)
- Class Dojo, Tapestry and Blog – The class blog is a weekly review of highlights.
- Parking – Please park courteously and sensibly for our neighbours. Please ensure your drive safely around our schools.
- We cannot help if we do not know, so come and talk to us.



Extra-Curricular Activities & Childcare

- We offer several extra-curricular clubs, as well as an after-school childcare service at Ormesby, which currently operates from Monday to Wednesday.
- This sports-orientated and active After-School Club runs from 3:15PM to 5:00PM on Mondays and Tuesdays and until 4:30PM on Wednesdays. Staff operate a walking bus between the Infant and Junior schools to enable pupils from both schools to attend it.
- We have an interactive outdoor Reception area and access to a state-of-the-art immersive learning classroom based at our Junior school site.
- We have a Gymnastics Specialist, Music specialist and termly enrichment sport sessions. We have access to our own outdoor nature area all year round, which is built cleverly into our curriculum.
- As the children become more familiar with the routines of the school, there will be the opportunity to attend clubs. We have had Fencing, Dodgeball, Archery, Football, Quidditch and Dance.
- All charged services must be paid for promptly using our cashless system, ParentMail.



Gallery



Transition Arrangements

- Inside the pack you have information on what time to bring your child in on Transition Day Monday 30th June 2025. This will be for a morning and afternoon session.
- Information will be communicated via email. Rest assured we will support your child through a successful transition. We have already begun additional transition sessions with the children at our feeder pre-school.
- Children will begin in September with a staggered start for the first week only. All children attend Wednesday 3rd September until 12:00pm. On this day and to help children settle on handover, we will operate three times for drop off: 8:45am Group 1, 9:00am, Group 2 and 9:15am for Group 3. On Thursday 4th September, the children will stay for lunch and finish at 1:15pm arriving all at the same time of 8:45am. On Friday, the children will stay for the whole day again arriving at 8:45am.
- Mrs. Bunker will be able to provide further information via email if you need to ask her anything. Email addresses on the next slide.



Thank you and we look forward
to seeing you and your child
SOON.

Please feel free to ask us any questions.

Mrs. Bunker – mrsbunker@ormesbyinfant.school

Office - office@ormesbyinfant.norfolk.sch.uk

